



EMK3 Pipeline Ops – Meters and Production Module

Make responsive decisions with accurate, timely, reliable volume information

Natural Gas Crude Oil

Access to accurate, timely, and reliable meter status and volume information is critical to pipeline operations. This can impact system balancing, shipper balancing, and nominations. For this, EMK3 offers the Meters and Production Module.

The **Meters and Production Module** stores basic information on all meters on the pipeline. It provides a single portal for all volume information critical to pipeline operations. It integrates with your production system to receive volume information from the field. In addition, it integrates with your gas plant system to receive plant allocated volumes.

Key Features

- **Configurable Pipeline Setup:** Manage multiple pipelines each with their own segments, capacity, pressure base, meters, and more.
- **Manage Meter Information:** Manage basic information on all meters on the pipeline. Information includes meter name, meter no., meter type and status, operator, segment, capacity and more.
- **Calculate Fuel and L+U:** Set up multiple segments to model field fuel and L+U then calculate appropriate contract volumes.
- **Support Multiple Allocation Methodologies:** For each meter, specify the allocation methodology (PDA). Choose from Pro-Rata Based on Noms, Keep-Whole, Fixed Percent, Pro-Rata with Keep-Whole and Contract Point Rank.
- **Track Shipper Entitlement and Allocation Percents:** For each shipper on a meter, enter entitlement percents and fixed allocation percents.
- **Store Production Data:** Store daily “Estimated Actual” and “Actual” production information in multiple units like MCF, measured MMBtu and Bbl.
- **Store Gas Analysis Data:** Store various gas analysis information such as BTU, Pressure, Temperature, CO2, N2 and more.
- **Store Allocated Gas Plant Data:** Store gas plant allocated volume by meter for residue, bypass, and shrink.
- **Store Gas Plant PVR Data:** Store gas plant PVR percent for use on shipper entitlement and balancing calculations.
- **Integrate with Production and Gas Plant Systems:** Integrates with your production system to receive daily meter readings. Also, integrates with your gas plant system to receive plant allocated volumes
- **Define Information Alerts:** Set up various types of automated user alerting, such as a change in production volume or a meter added.
- **Generate Reports:** Meter Information, PDA by Meter, Monthly Production, Average Production, and more.

Fig. 1 – List of Pipeline Meters

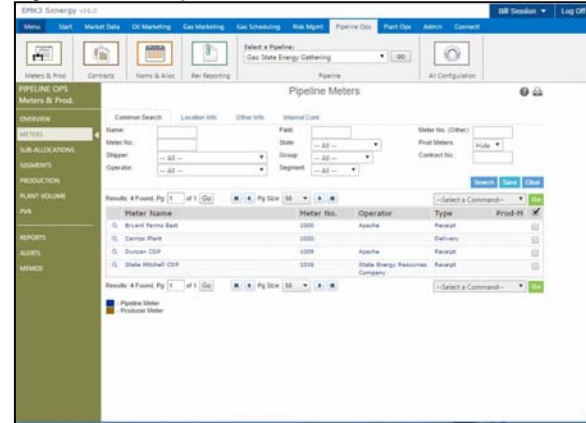


Fig. 2 – Meter PDA Information

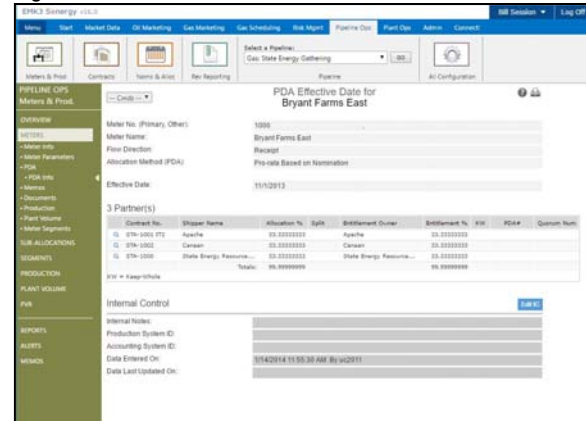


Fig. 3 – Meter Production

